

# Celebrating Our First Year!

## GreenAllies Report



### Official Non-Profit Status

May 2014



### GreenAllies Conference

February 2015



### Althouse Arboretum Improvement Work

Spring 2015



### GreenAllies Challenge

September 2015



### Family Events

Summer 2015



### Environmental Summer Camps

July 2015



### Mobile Sustainability Lab Work Begins

August 2015



### Grand Opening and 5K Race

September 2015



### Empowering student leaders...

Now and for years to come!



# Board of Directors



Todd Hilsee  
President

Kara Hackman  
Secretary

Barbara Hilsee  
Treasurer

Jack Althouse  
Nancy Baker  
Jessica Brennan  
Jenah Fluck

Lissa Hilsee  
Emily Isabell  
Andrew Kraynak  
Kathryn Kundrod

Jack Layne  
Herbert C. Miller, Jr  
Richard Roller  
Sarah Self

## Contact GreenAllies

Ken Hamilton  
Executive Director

[ken@green-allies.org](mailto:ken@green-allies.org)

35 King Road,  
Green Lane, PA

Althouse Arboretum

1794 Gilbertsville Road,  
Pottstown, PA 19464

## Our Mission

To empower and support students to innovate and lead environmental sustainability efforts.

## Our Vision

A world where students lead the way to a more sustainable future.



# Director's Letter

Ken Hamilton

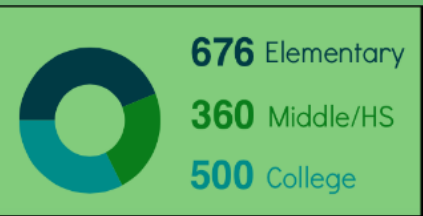
A new name doesn't make us forget where we came from. A new name means we are ready to go places where, one year ago, we didn't even dream we would be headed. This is probably the best way to summarize my thoughts on the expanding impact of GreenAllies. One year of experience has sharpened our focus and made us a better organization. The incredible highlights you see on the following pages are a direct result of the exceptional people committed to bettering their communities through student leadership, in spite of a system which builds barriers against it. Whether consciously or subconsciously, we have taken on the traditional system, broken barriers by remaining engaged despite obstacles, and continue to believe in a better future where empowered students can lead the changes for a more sustainable earth.

We are very proud of what we have accomplished during our first year. However, we are not content on just moving forward, but instead are looking for new ways to move upward and grow. Starting our first national challenge for middle and high schools; designing and constructing a mobile classroom for schools throughout the region; and beginning phase one of the construction of a new classroom building at the Althouse Arboretum are all indicators of a small group turning into a powerful organization. It is an exciting time for the GreenAllies and we are glad you are part of it. We would be nowhere without the generous support we receive from our friends and supporters. It is through you that we can honestly say that GreenAllies is off to an amazing start!

This report is a result of hours of hard work by student leader Tori Bateman. Her creative visualizations and diagrams will hopefully provide you with a clear picture of the amazing impact we have had in our first full year.

## Students Participants

1 5 3 6



The number of students directly involved is truly amazing, considering the fact that we have spent much of this first year just getting programs up and running. It is a great indication of the future potential impact of GreenAllies programs.

## Introducing "GreenAllies"



The SAVE Alliance Foundation has a new name! After a great collaboration with the Main Line Chamber of Commerce Leadership Main Line, we decided to change our name to more accurately represent our mission.

The name "GreenAllies" embodies the kind of organization we want to be-- an organization that empowers students and works with them to create a more sustainable future.

# Althouse Arboretum

Managed by GreenAllies



GreenAllies received over \$37,000 in grants to develop the Althouse Arboretum property. Improvements include:

- 1.5 mile Sprugel's Run Trail
- handicap accessible gardens
- parking lot
- outdoor classrooms
- edible and native plant gardens



hours volunteered

**1200**

feet of trail blazed

**3000**

## Student Leadership

## Education at the Arboretum



Students were involved in every part of the Arboretum planning, from meeting with township officials to creating a "Master Plan" for our land!

Everyone is learning at the Arboretum! Students have visited our campus for educational tours, learning about forests, wildlife, and sustainability. They are also encouraged to appreciate the beauty of the outdoors! The Arboretum has also hosted local educators for teacher training sessions, where local teachers learn how to best utilize the Arboretum's resources for their classes!



## Summer Programs



Over the summer, we ran over 20 environmental programs for kids! Campers enjoyed hikes, games, and getting to know the outdoors! Local students served as counselors, and the camps were a great experience for everyone involved!



## Internship Program

9 high school and college students joined us as interns for the 2014/2015 year. They worked on gardens, website updates, new programs, and more, while gaining experience in environmental leadership.



## Grand Opening

September 26, 2015



150 community members joined us at the Althouse Arboretum this fall for our official Grand Opening! 80 runners completed the inaugural Sprögell's Run 5K Trail Run.



## Coming Soon:

We are working hard to bring many exciting additions to the Arboretum!

### -Low Ropes Course

Our engaging course will teach teamwork and leadership skills

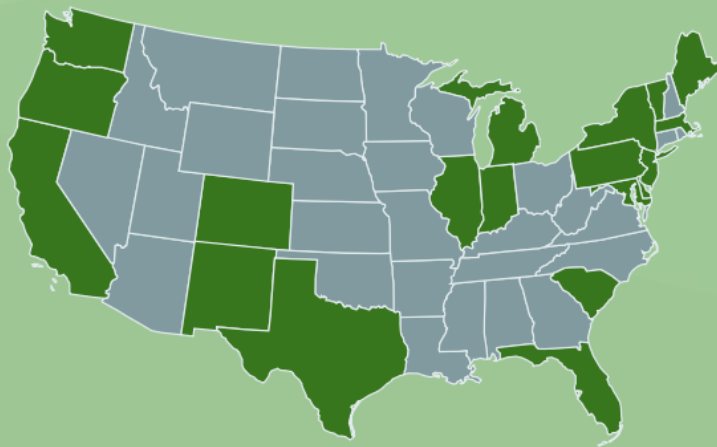
### -Children's Forest

This interactive forest will encourage children to love and appreciate playing in the woods

### -Classroom

Our new building will allow for year-round programs for students

# GreenAllies Network



**62 Advisors**

Our national network is growing!

Our GreenAllies Advisors are a valuable part of our organization. Hailing from 18 states across the country, these dedicated professionals and students provide advice and resources for both the GreenAllies staff and the students we serve.



[www.greenalliesnetwork.org](http://www.greenalliesnetwork.org)

Our new interactive site for students!

- project database
- conference details
- message boards
- GreenAllies Challenge



## GreenAllies Conference



"The GreenAllies Conference was a great experience. I left feeling empowered and inspired."

-Student feedback

Success!

120+ students  
20+ colleges  
12 workshops

College students gathered in February of 2015 for the first annual student empowerment conference sponsored by GreenAllies. Inspirational speakers like David Radcliff, director of New Community Project, shared their passion for the environment with the students. Workshops included discussions about sustainable agriculture, climate change, how students could better serve their college campuses as environmental leaders.



# Student Projects

Examples of projects initiated by GreenAllies and run by students

## Tree Recycling



The first of many student run projects, the Christmas Tree Recycling Day brought in 150 trees!



## Compost Education Park



Students at Park Forest Middle School built a community compost education park with assistance from GreenAllies advisors! Cafeteria food is collected and composted along with yard waste from the school.



## School-Wide Waste Audit



At Pennedale Middle School, students collected and analyzed waste from their school over the course of several days. The students then used that information to design a new recycling program!

## Community Night Hike



Students planned and led a Night Hike for area children, which attracted 350 community members! The event was staffed by 32 student volunteers.

# Outreach

GreenAllies advisors met with students at conferences in Philadelphia and Washington, D.C. at the Sparc the Wave Conferences. Student leaders gathered to hear about the many non-profits that they can work with to make a difference.

The conferences were a great opportunity to show the students what resources are available to them through our programs!



# GreenAllies Challenge

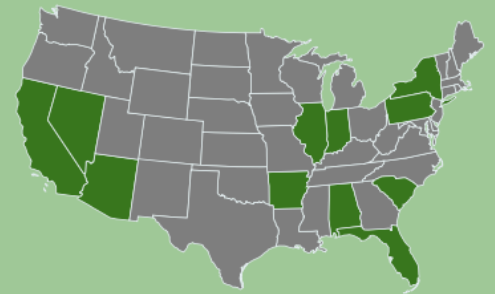


## National Environmental Scholarship Competition

The GreenAllies Challenge is a national competition for students in grades 6-12. Students will choose to either start an environmental club or lead an environmental project, which they will complete throughout the school year with assistance from GreenAllies mentors.

In April, students will submit a document, video, or other presentation to sum up their project. Projects will be judged on the basis of effort, creativity, environmental impact, and level of community engagement.

The winning student will receive a \$1000 educational scholarship, and \$1000 to put towards the cost of continuing their project.



Students from across the country have already registered for the GreenAllies Challenge!

For more information, visit the Challenge page at [www.greenalliesnetwork.org](http://www.greenalliesnetwork.org)

## How the Challenge Works



Choose to start an environmental club or project, and register for the Challenge



Connect with a GreenAllies Mentor through the Challenge message board



Implement the project in your community



Plan project, with the advice and resources of GreenAllies



Submit a final project to GreenAllies



Winning student will receive a \$1000 educational scholarship, and \$1000 to continue their project



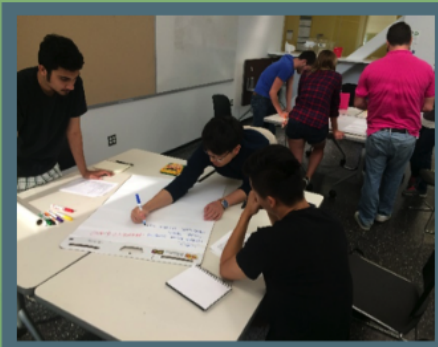


# Mobile Sustainability Lab

With the generous donation of a 2009 Fleetwood Icon Recreational Vehicle, GreenAllies hopes to bring sustainability science to schools throughout the region by converting it into a traveling classroom and laboratory.

At this time, 4th year architecture students from Philadelphia University are working on a new interior design that will inspire and empower student visitors while providing a “wow” factor.

When the Transportable Environmental Sustainability Showcase (TESS) is complete, it will travel across the country, bringing interactive sustainability demonstrations to students.

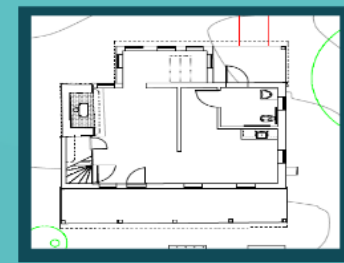


This artists' rendering shows the future indoor set-up of TESS

## The Vision

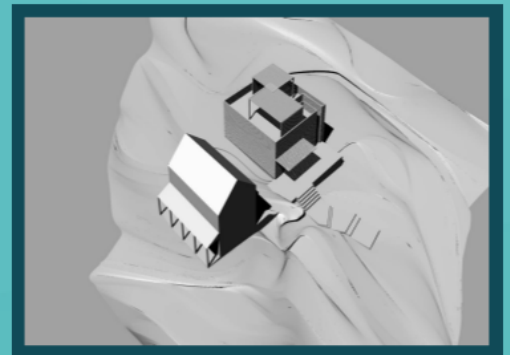
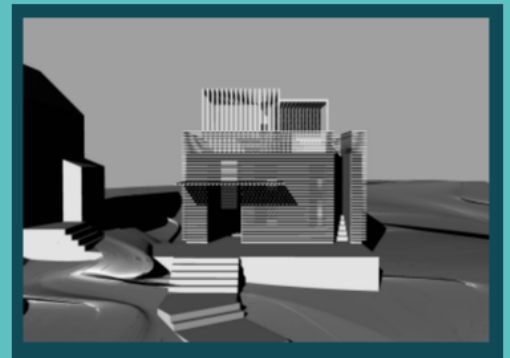
- interactive sustainability demonstrations
- electronic, changeable displays
- adaptable education programs
- beautiful, inspiring design
- sustainable construction materials

# Office Space



Renovations have begun on the historic house at the Althouse Arboretum! The lower level of the house will be transformed into a community resource center, and the second floor will be utilized as GreenAllies office space.

# Classroom Building



A sustainable classroom will be built adjoining the existing structure at the Althouse Arboretum. This classroom will be used as a space for programs, activities and community meetings. This additional work space will make the Althouse Arboretum a regional destination for schools and community organizations.



# 2015 Fiscal Update

## Total Income

**\$63,169**

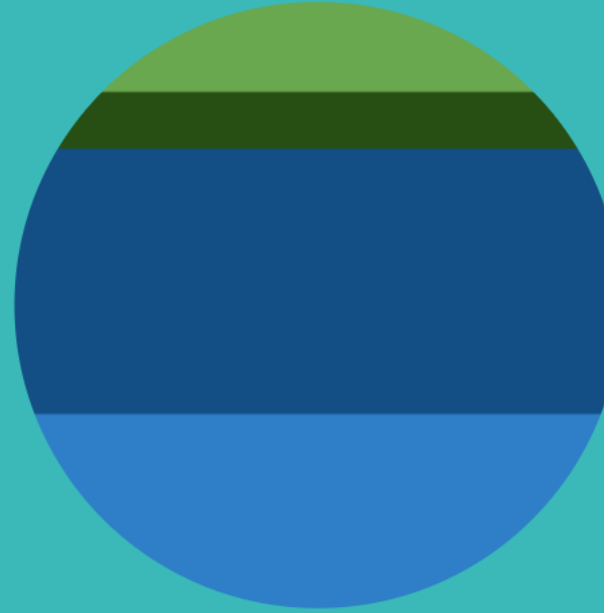
Individual Gifts: \$9,079

Corporate Contributions: \$7,055

Foundation Contributions: \$27,345

Government Funding: \$19,690.74

Jan-Sept 2015 Foundation Donations



## What We Need to Raise to Meet Our 2015 Goals



Raised so far:  
\$63,169

Still Needed:  
\$36,831

== \$100,000  
Total Goal

## Join our Campaign Today!

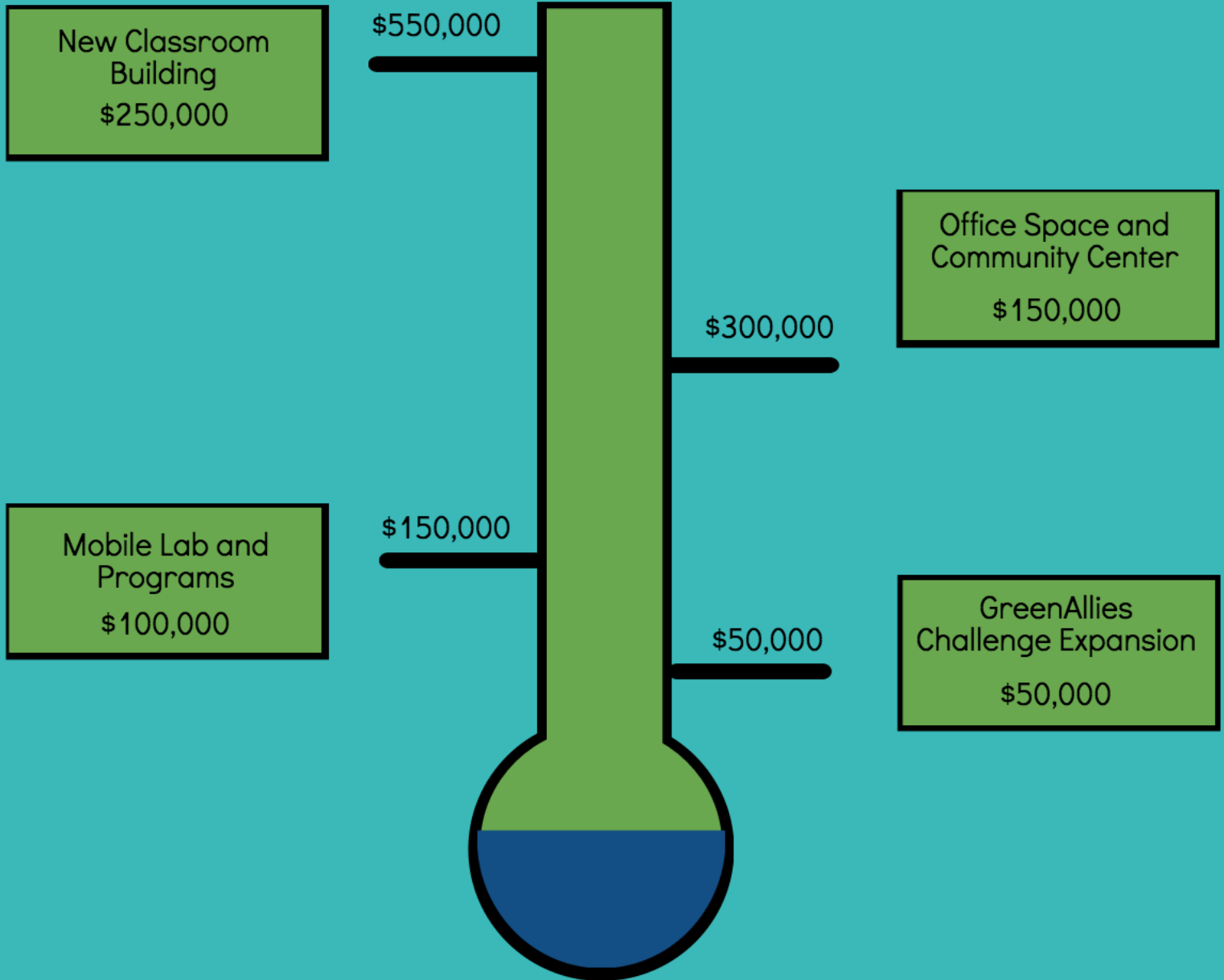
As you can see from our financial report, individual gifts are so important to our work! GreenAllies depends on people like you to support our environmental programs and opportunities.

[www.green-allies.org](http://www.green-allies.org)



# Capital Investment

Long term goal for financing



GreenAllies EIN # 46-1371507

As a 501c3 charity, all gifts to GreenAllies/ The SAVE Alliance Foundation are tax deductible according to the law. Official registration and financial information of GreenAllies/ The SAVE Alliance Foundation may be obtained from the Pennsylvania Department of State by calling toll free within Pennsylvania, 1-800-732-0999. Registration does not imply endorsement.



# Our Donors

## Individuals:

Jack Althouse  
Kyle Baker  
Nancy Baker  
Sean Baker  
John Bayard  
Kim Brehm  
Burns Family  
Charles & Connie Garner  
Elda Collier  
John Collier, Jr. & Patricia Todd  
John & Charlotte Collier  
Stephen Engroff & Diana Ray  
Rebecca & David Fine, Jr  
Jenah Fluck  
James & Noreen Gaynor  
Andrew & Crystal Gilchrist  
Oliver Gingrich  
Eugene Goldman  
Kara & Shaun Hackman

Annette Hamilton  
Ted & Helen Hamilton  
Joanne Hilsee  
Lissa Hilsee  
Emily Isabell  
Leigh Jackson  
Kristina King  
Joan King  
King Family  
Gerald Kiszatky  
Andy Kraynak  
Gita Kunrod  
Kathryn Kunrod  
Kristen Lauria  
Lisa Manresa  
Herbert C. & Janet M. Miller  
Daniel S. Moore  
Jim & Jane Murphy

Robert Murphy  
Nancy Toothaker  
Patricia O'Connell  
Amy Perilli  
Robert Pfeiffer  
Richard & Anne Roller  
Adele Saccarelli-Cavallaro & Michael Cavallaro  
Amanda Sassa  
Kevin & Sarah Self  
Kari Smith  
James Spatz  
Steven Scolari  
Kristin Strunk  
Elwood & Paula Taylor  
David Weigle  
John & Peggy Wildermuth  
Gayle Wolf  
Gerry & John Yervey

## Corporations:

Althouse, Jaffe and Associates  
Arcadia at Coddington View LP  
Behmerwald Nursery  
Capital Wine & Spirits, LLC  
Center Point Pond  
Citadel Bank  
Community Recycling  
Complete Family Eyecare, LTD  
D and D Collision Services  
Daniel's Produce and Dairy  
Danny's Custom Computer Service  
Dolan Law Group, LLC

Detweiler, Hershey & Associates, P.C.  
Fujiyama at Halfway House  
Fulton Bank  
F.R. & S. Inc.  
Hetrick Gardens  
Hopewell Trucking and Excavating  
iCreate Café  
J.P. Mascaro  
Kaleidoscope Angels  
Kirk's Lawn Care  
LTL Consultants LTD  
Leadership Main Line

MAS Tutoring, Inc.  
Main Line Chamber of Commerce  
Massage and Bodywork Centers, LLC  
Nancy Baker Consulting, Coaching & Mentoring  
PECO  
PJM Interconnection  
STA Engineering, Inc.  
Taylor Investment Management  
Todd's Tree Service, Inc.  
Total Rental, Inc.  
Twin Ponds Golf Course  
Ullman Tree Service

## Foundations & Government Grants:

Community Conservation Partnership Program  
Greater Pottstown Foundation  
Natural Lands Trust  
PA Department of Conservation & National Resources  
Pennsylvania Horticultural Society

Pottstown Area Health and Wellness Foundation  
Schuylkill River Heritage Association  
The Merck Foundation  
Tood & Barb Hilsee Foundation

**Thank You**  
for your support!

GreenAllies is a success because of donors,  
advisors and community members like you.  
Your support means the world to us!